

Port of Portland Aviation Overview



PORTLAND INTERNATIONAL AIRPORT

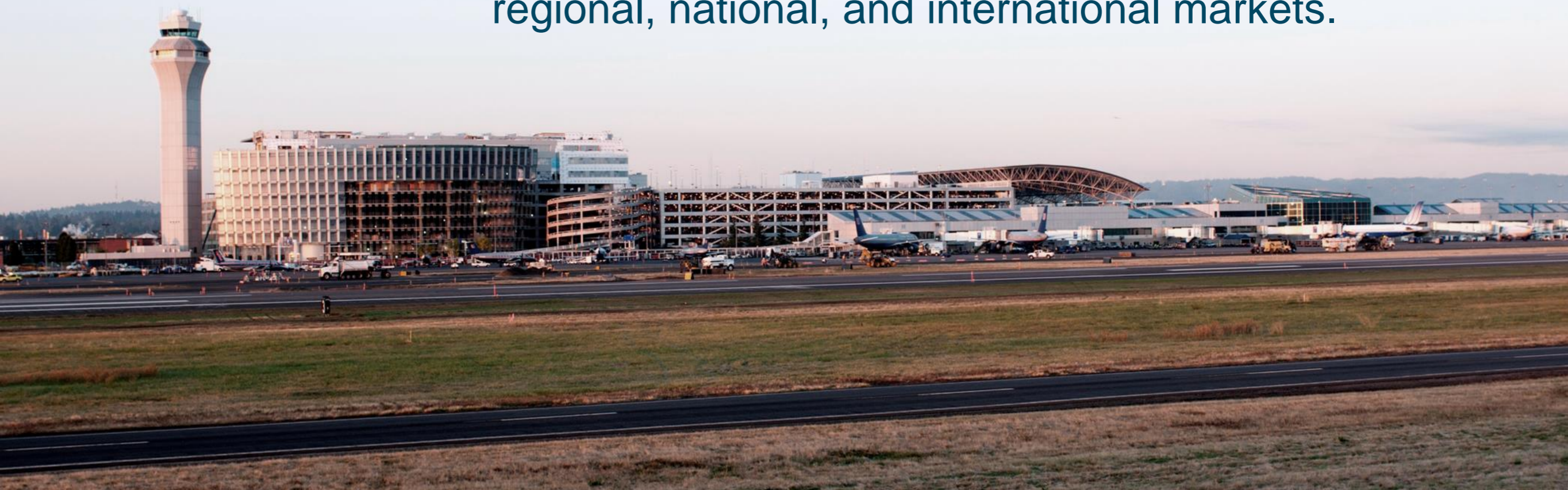
Vince Granato
Chief Operating Officer

Port of Portland Operations



Aviation Mission

To operate, maintain, and promote a sustainable airport system (Portland International, Hillsboro, and Troutdale Airports) that satisfies the air transportation needs of our customers by providing competitive cargo and passenger access to regional, national, and international markets.



Portland International Airport Overview

- Annual Passengers = 15.9 million in 2014 – Record High
- Passenger Airlines = 14 (Including nonstop service to Asia & Europe)
- Cargo Airlines = 8 (Regional hub for FedEx & UPS)
- Annual Operations = 216,250 take offs & landings
- Runways = 3 (3,300 acres)
- Airport Employees = 10,200 (16,600 regional jobs)
- State & Local Taxes = \$86.8 million
- Regional Business Revenue = \$3.9 billion
- “America’s Best Airport” – *Travel + Leisure* 2013, 2014
- “Nation’s Best Airport” – *Condé Nast Traveler*
2006, 2007, 2008, 2010

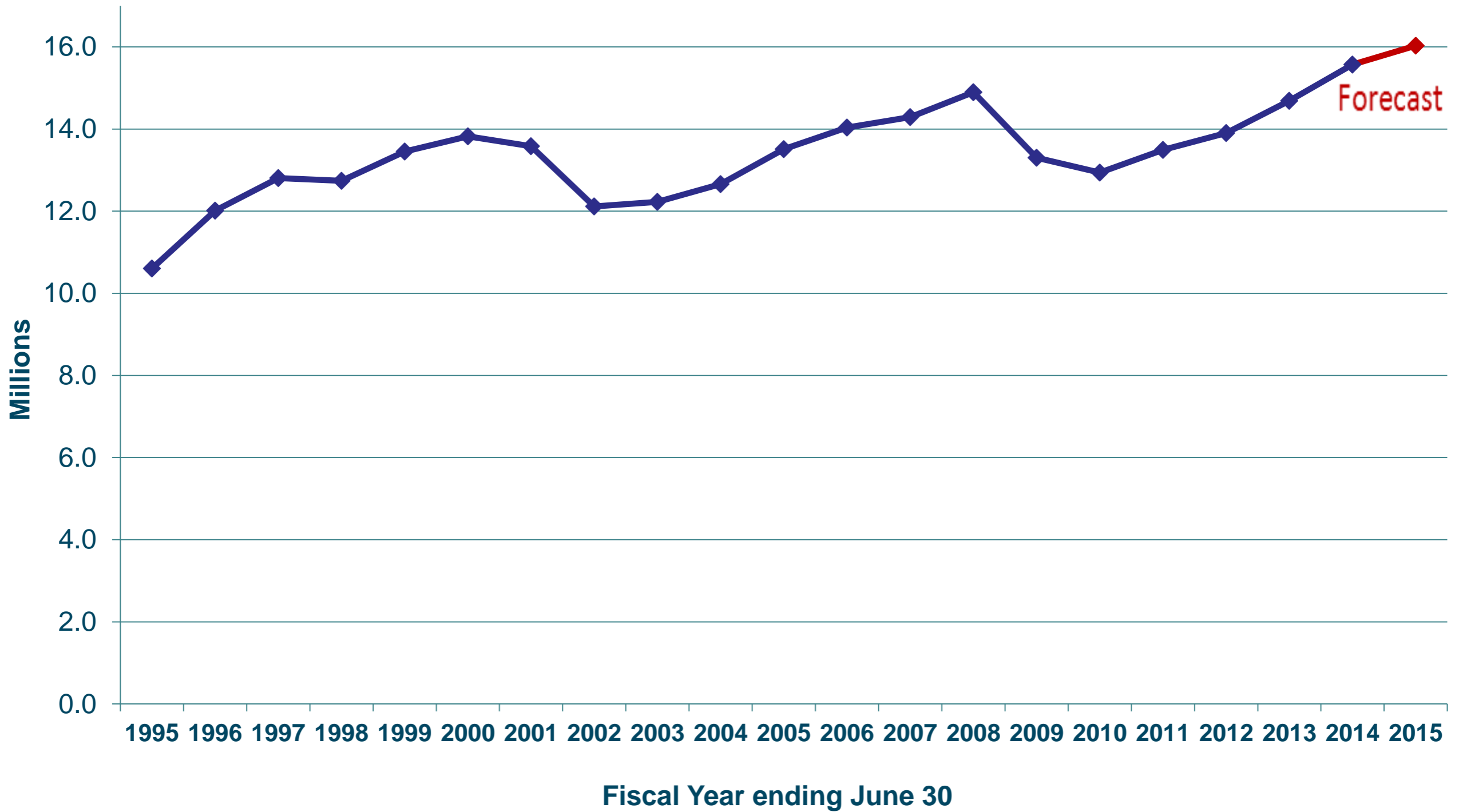


Portland International Airport Overview, con'd.

- Passenger Growth Rate = Currently at 2.1%
- Domestic Nonstop Service = 52 destinations
- International Direct Service = Amsterdam, Calgary, Frankfurt, Guadalajara, Los Cabos, Narita, Puerto Vallarta, Reykjavik, Vancouver BC
- International Growth Rate = Estimating an additional 100,000 more passengers this year, or close to 600,000, a 20% increase
- International Service – New service will provide additional lift during the peak summer season when our demand for European travel more than doubles
- 2014 Total Cargo Tons = 228,564 (up 4.2%)



Total Passengers – Key Business Driver



Hillsboro Airport (HIO)

- Annual Operations = 221,932 take offs & landings in 2014 – Busiest airport in Oregon
- Fixed Base Operators – Business aviation focus with four FBOs
- Corporate Aircraft Base – Intel air shuttle, Nike, Columbia Sportswear
- Customs & Border Protection – Fee-based facility
- Hillsboro Aviation – One of the largest combined fixed-wing and helicopter flight training schools in the western United States
- Employees = 436 (937 regional jobs)
- State & Local Taxes = About \$5.1 million



Hillsboro Airport (HIO) Third Runway

- New Parallel Runway opened April 30, 2015
- Total Project Budget: \$16.7M (FAA Grant \$9.65M; Connect Oregon \$4M)
- Measures 60-feet wide and 3,600-feet long



Troutdale Airport (TTD)

- Air traffic control towered airport
- Total Operations = 100,415 take offs & landings in calendar-year 2014
- Ranked Third Busiest Airport in Oregon
- One Fixed Base Operator
- Two Flight Training Schools
- Employees = 61 (253 regional jobs)
- State & Local Taxes = About \$1.1 million



Troutdale Airport (TTD) Master Plan

- Last Master Plan completed in 2004 and markets are changing
- Soliciting broad community participation and input about the future role of the airport
- Desire to improve the financial performance of TTD
- Possibility of developing portions of airport land for commercial or industrial uses
- Completed the analysis of aviation and land-use demand for the 20-year planning horizon
- PAC will present the Port's Executive Director with recommendations for a long-term development plan
- Project completion in the spring of 2016



Thank you



PORTLAND INTERNATIONAL AIRPORT