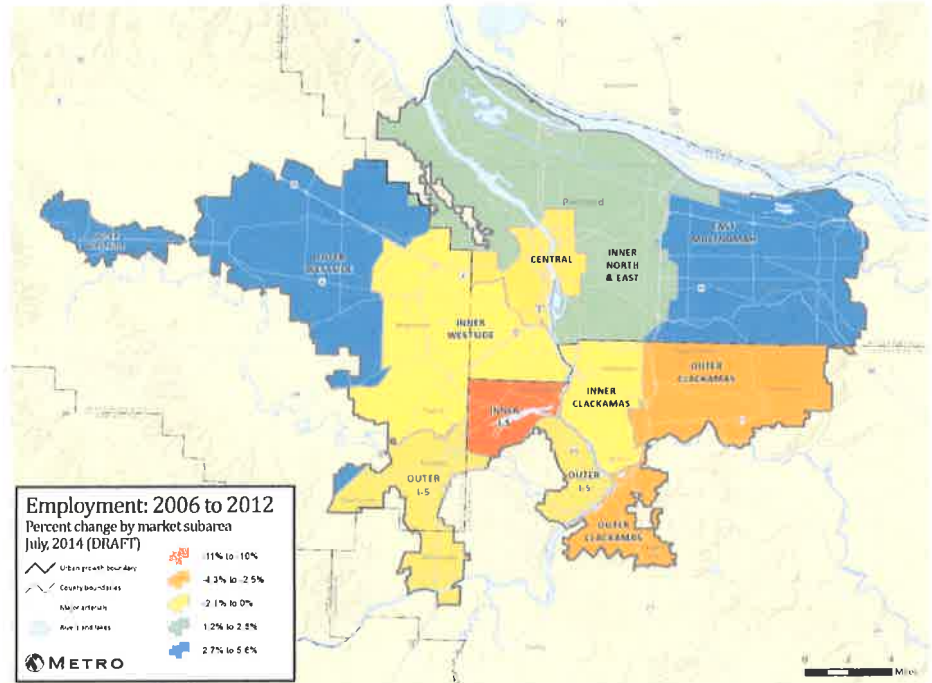


Policy considerations

CHANGES IN OUR COMMUNITIES

People around the region are concerned about new development in their communities. The concern exists not just in existing urban areas experiencing a new wave of development, but also in areas added to the urban growth boundary. With population growth expected to continue, change is inevitable. What policies and investments are needed to ensure that change is for the better?



Map 2 Employment gains and losses in Metro UGB 2006 - 2012

From 2006 to 2012, there was also a change in where jobs were located in the three-county area (Map 2). While about 25 percent of all jobs could still be found in the central part of the region, the subarea experienced a loss of about 2,300 jobs, or 1.2 percent. The inner I-5 area saw a decline in employment of roughly 2,200 jobs, or 11.0 percent of 2006 employment. This area was home to many firms involved in real estate and finance, industries that were hard hit by the housing collapse and recession. Many businesses in the area, like mortgage and title companies, contracted or closed during this time period. For example, the Kruse Way area in Lake Oswego had an office vacancy rate of 22.4 percent in 2012. In the southeastern part of the region, the outer Clackamas and outer I-5 subareas together lost about 3,400 jobs or 3.2 percent. In contrast, the outer Westside experienced the greatest increase in employment, gaining about 5,800 jobs, an increase of 5.6 percent. The East Multnomah subarea also gained jobs, increasing employment by 1,800 or 2.7 percent.

*loss of 5,600 jobs
Most all of these are in Clackamas County*

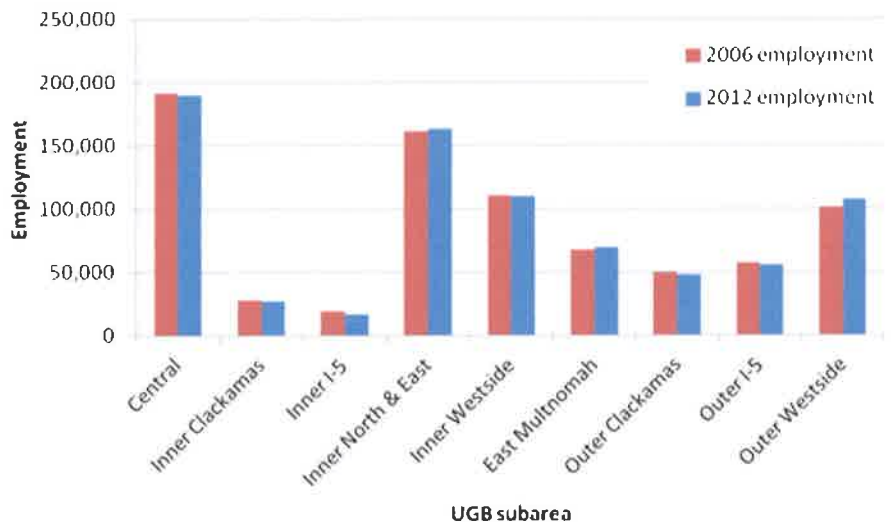


Figure 3 Total employment by subarea for 2006 and 2012